

LED

IK10

IP67

50°  
-20°

### Standard model

High quality non corrosive linear LED lamp

### Emergency light model

Standard model with an emergency mode

#### SEAL

#### 650-230-25

#### 1250-230-25

Order No.

standard model - 1001831  
emergency model - 1001833

standard model - 1002201  
emergency model - 1002204

### Electrical Characteristics

Nominal Voltage	230VAC	230VAC
Operating Voltage	100 - 305VAC 110 - 430VDC	100 - 305VAC 110 - 430VDC
Total Power	~25W	~55W
Power Factor	>0.97 at 230VAC	>0.97 at 230VAC
Operating Temperature	-20°C to +50°C	-20°C to +50°C

### Light Technology Characteristics

Initial Total Lumens	3000lm; minimum 450lm in emergency mode	6500lm; minimum 450lm in emergency mode
Emergency Light	1.5h autonomy, 8h charging time, NiCad Battery	
Luminary Efficacy	~120lm/W	
CCT	~5000K	
CRI	80 - 85	
Illumination Angle	120°	

### Protection & Construction

IP and IK Protection	IP67, IK10	
Protections	OVP, OTP	
Luminary Inner Protective Cover	PMMA 2.5mm	
Removable Protective Cover	Polycarbonate 2.5 - 3mm	
Housing	PMMA, PA6, PC, ABS	
Gasket	Silicone gasket	
Cable entry	6 - 13mm	
Fixture Weight	2.1kg, 2.5kg as emergency light option	3.5kg, 3.9kg as emergency light option
Lifespan(on 25°C)	50 000 hours	

•Emergency and  
Standard model

•Emergency model with  
1.5h autonomy

•Mechanical protection  
grade IP67, IK10

•Excellent thermal  
management

•Different mounting  
options

•Water resistant

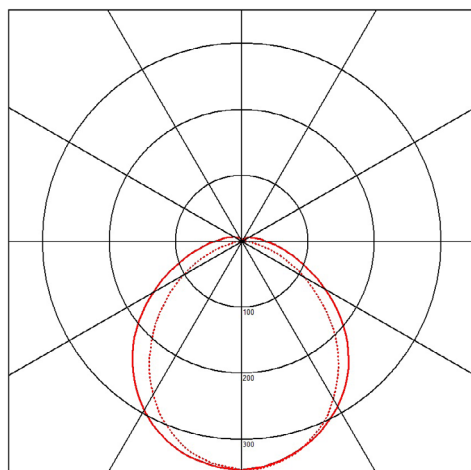
•No glare effect

•High lumen output 3  
000 lm to 6 500 lm

•Maintenance free

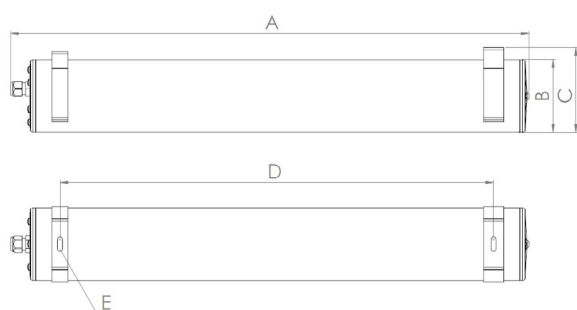
# POLAR CURVE

SEAL models

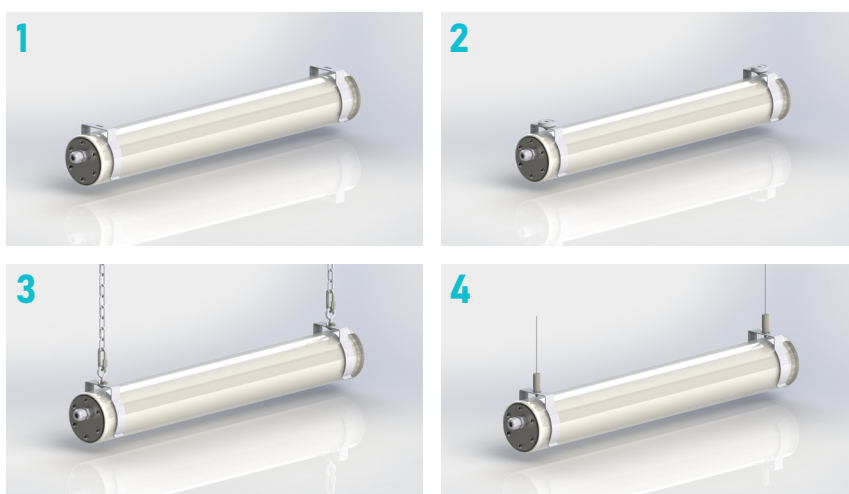


SEAL models	Beam Angle
650	120°
1250	120°
650 EM	120°
1250 EM	120°

## DIMENSIONS, CONNECTION



Seal	650/650 EM	1250/1250 EM
A	650mm	1250mm
B	ø90mm	ø90mm
C	105mm	105mm
D	400-550mm	1000-1150mm
E	2 x ø6mm	2 x ø6mm



\*available mounting types in table below

## ACCESSORIES

	Protective Transparent Cover for Seal 650mm 1001962	1	Mounting Bracket with nut and screw 1002032	4	Mounting Bracket with Cable Suspension 1002306
	Protective Transparent Cover for Seal 1250mm 1002305	2	Magnetic Mounting Bracket 1002033		Hook Eye Set 1001856
	Bottom Cap 1001450	3	Mounting Bracket with Chain Suspension 1002037		Custom-made Bracket on Request